

# Waiohuli-Kēōkea

## *ACTUALIZING VISIONS*

December 18, 2017

By Kekoa Enomoto

### PĀ'UPENA COMMUNITY DEVELOPMENT CORPORATION (CDC)

▶ INTRODUCING PĀ'UPENA CDC, 501(c)3 – FOUNDED IN 2016

- ▶ **VISION** - to fulfill Prince Kūhiō's century-old dream for native Hawaiians to reconnect with Waiohuli ahupua'a in thriving agricultural and pastoral communities, and to share this paradigm throughout the pae 'āina.
- ▶ **MISSION** - to provide resources and training to empower fellow Hawaiian Home Lands Trust beneficiaries to build homes and self-sufficient communities.

▶ PĀ'UPENA CDC'S BOARD MEMBERS

NORMAN ABIHAI

RODNEY AKAU

KEKOA ENOMOTO

LEONA MALI'IKAPU MOORE

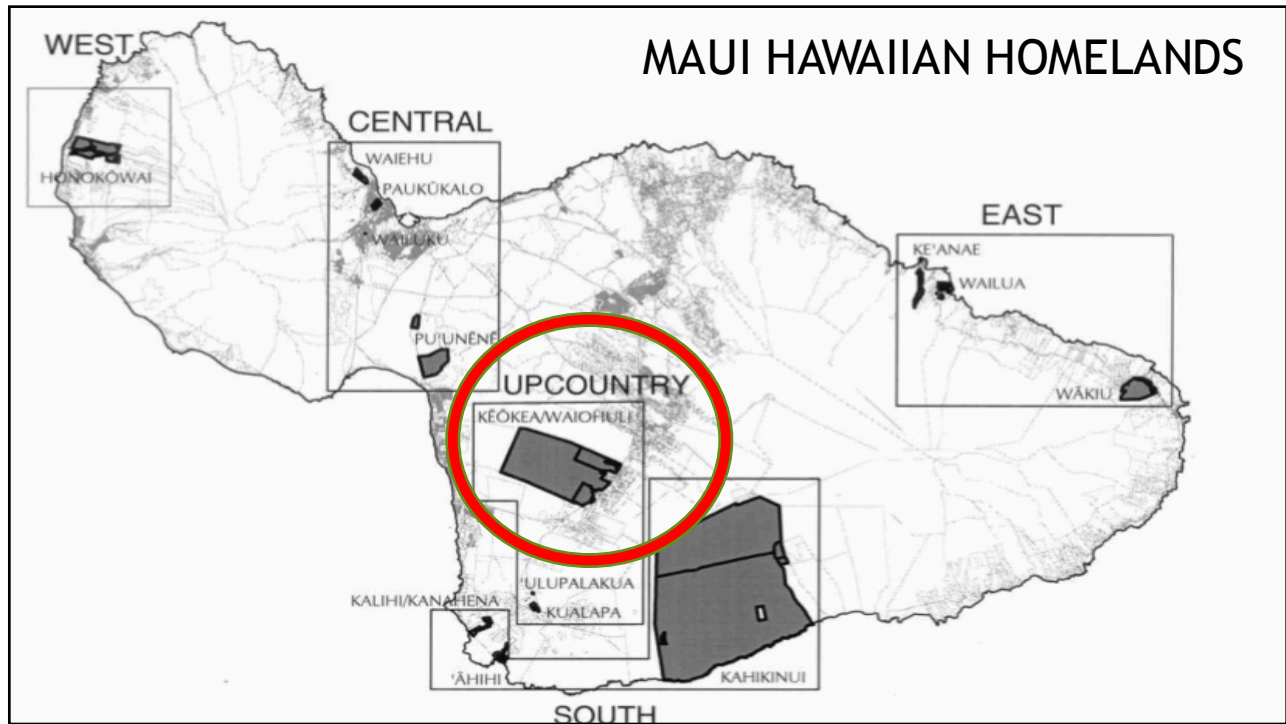
BOBBY PAHIA

HARRY RODRIGUES

EMMA ABIHAI YAP

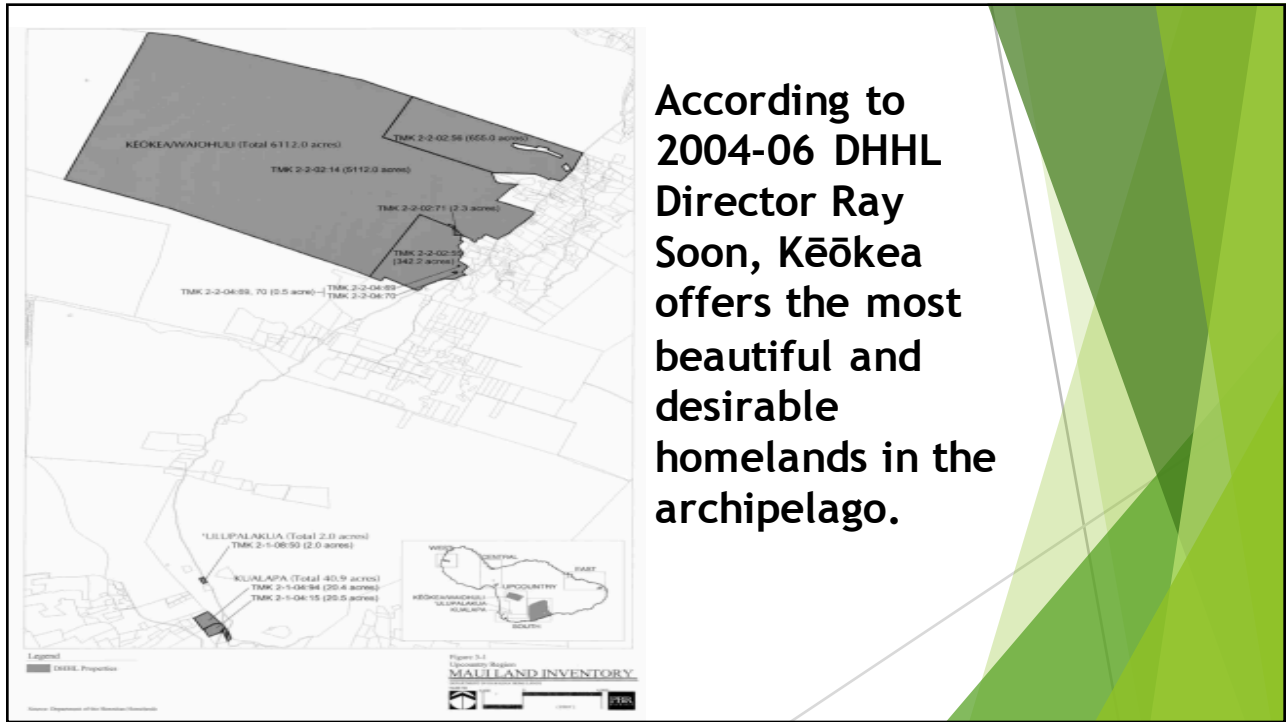
IOANE KEANA'ĀINA

KAEO ORNELLAS



## Waiohuli-Kēōkea Tract

- 4,005 Acres in the Waiohuli ahupua'a
- Bound by Ka'ono'ulu Ranch, Haleakalā Ranch, and Waiohuli and Kēōkea homesteads
- Characterized by rolling hills, with elevations ranging from 640 – 3,000 feet above sea level
- Contains loamy soil or soil consisting of sand, silt and clay to be used for pasture and truck crops (large-scale crop production)



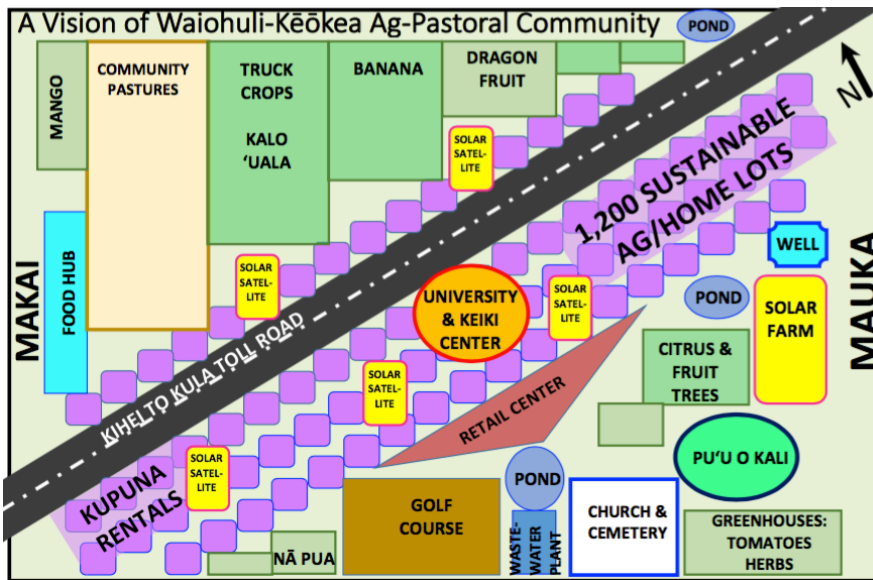
According to 2004-06 DHHL Director Ray Soon, Kēōkea offers the most beautiful and desirable homelands in the archipelago.

## Carol Lee Kamekona

Agricultural Wait-lister since 1994



## A Vision of Waiohuli-Kēōkea Ag-Pastoral Community



### *Accountability to...* 2004 MAUI ISLAND PLAN'S KĒŌKEA/WAIOHULI ANALYSIS

#### ► BENEFICIARY DEMAND

“Approximately 1,111 units are needed in Upcountry to meet beneficiary demand. Of the Upcountry lands that are in the DHHL inventory, Kēōkea/Waiohuli presents the best opportunity to develop residential homesteads and meet beneficiary demand” (Page 98)

## Accountability to...

# DHHL's 2010 KĒŌKEA-WAIOHULI REGIONAL PLAN PROJECTIONS

## Summary of Priority Projects

(Page 33)

### Priority Projects

#### 1 Develop Water Source and Related Infrastructure for Agricultural and Residential Lots

- Coordinate with the Natural Resources Conservation Service (NRCS), State Department of Agriculture (DOA), County Department of Water Supply (DWS) and Maui County Farm Bureau to extend dual agricultural waterline from Naalae Road to Kēōkea Agricultural lots
- Develop new water source, storage and transmission infrastructure to serve the build-out of the Waiohuli-Kēōkea homesteads
- Cost: To be determined, Federal Funds available for a portion of the dual agricultural line construction
- Status: Ongoing discussions with NRCS, DOA, DWS and DHHL to determine scope of improvements and additional funding needed
- Exp Comp: 2012 (to initiate design for agricultural waterline)

#### 2 Identify and Support Development of Community Facilities for Waiohuli and Kēōkea

- A total of 69 acres are allocated for community and park use throughout the Waiohuli and Kēōkea homesteads
- A site has been identified and community planning is in progress for a community facility in Waiohuli on 17 acres of land
- During the update of regional plan, beneficiaries expressed the need for an additional community center in the Kēōkea homestead, as well as other community facilities such as an area for horse riding and ATV use, a green waste composting site and a cemetery
- Costs: To be determined
- Status: Community planning for the Waiohuli Community Facility is underway, funding for construction drawings and environmental review needed; Waiohuli-Kēōkea Homestead association meetings to be scheduled to determine other possible locations for community uses
- Exp Comp: 2011 (to acquire funding and initiate Environmental Assessment process for Waiohuli Community facility and to identify and assess sites for other community facilities in Kēōkea and Waiohuli)

#### 3 Support the Development of a Kihel to Kula Road Through Hawaiian Home Lands

- During review of the regional plan update, beneficiaries expressed a desire for a new roadway that would connect the Waiohuli-Kēōkea lands to the South Maui area. The new roadway would run through the DHHL lands
- Costs: To be determined
- Status: Preliminary discussions with the State Department of Transportation and DHHL are needed to determine whether the proposed roadway could be added to the State Transportation Infrastructure Program (STIP) for funding
- Exp Comp: December 2011 (to initiate discussions with Haleakala Ranch, SDOT and initiate environmental review process)

#### 4 Support Efforts to Implement/Malama Cultural Preserve Management Plans

During review of the regional plan update, beneficiaries expressed a need to maintain and care for the historic, archeological and natural sites located within the Maunaloa Kāhuna Homesteads, Baka Waiohuli and

## Accountability to...

# DHHL's 2010 KĒŌKEA-WAIOHULI REGIONAL PLAN PROJECTIONS

## Priority Project - Develop Water Source and Related Infrastructure for Agricultural and Residential Lots

(Page 35)

### Description:

This project originally began in 1997 as a way to provide Upcountry farmers with sufficient agricultural water to use on their lots. Since then, an Environmental Impact Statement (EIS) has been completed for the project, allowing construction of the waterline to begin. The Kēōkea homesteads are near the end of the waterline and have not been able to benefit from the project. Because these homesteaders are restricted to using only 600 gallons of water per day, their agricultural pursuits remain limited. As Federal funding is already in place, and the County of Maui, Department of Water Supply (DWS) is proposing infrastructure improvements to its Upcountry system, DHHL will need to coordinate with the State Department of Agriculture to extend the line into the Kēōkea homesteads and identify funds for the construction of internal lateral distribution lines.

In addition, homesteaders are also interested in extending a dual (Agricultural and Potable) waterline to Kēōkea and Waiohuli that would increase their usage capacity for both agricultural and potable drinking water. There is a Capital Improvement Project (CIP) proposed by the DWS for source development in the Pala-Haiku region in the Fiscal Year 2011 budget. The new source project may assist in providing source for the Upcountry area, particularly for the agricultural waterline. Continued support for this and other source projects which may benefit the Upcountry area should be supported.

### Estimated Completion Date:

2012 (to initiate design for agricultural waterline)

### Location:

Kēōkea

### Status:

The State Department of Agriculture is currently working to extend an agricultural waterline into Kēōkea but lacks the necessary funding. Federal funding and County support for the project has been secured and the project currently has support from Senator Daniel Inouye. Separately, the Fiscal Year 2011 budget for the County of Maui has allocated funding for water infrastructure improvements in the upcountry area. These improvements will support the water service infrastructure in the Upcountry area.

### Partners:

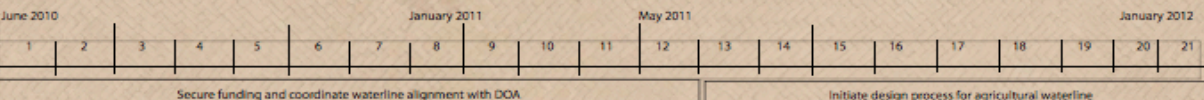
Maui County Farm Bureau, Natural Resources Conservation Service (NRCS), State of Hawaii, Department of Agriculture (DOA), County of Maui, Department of Water Supply (DWS), DHHL

### Cost:

Unknown, to be determined when waterline alignment confirmed.

### CRITICAL PATH

- Coordinate with DOA to secure funding for lateral distribution lines to service the Kēōkea homesteads.
- Coordinate with DOA to design the lateral distribution lines.
- Monitor and support DWS funding for new source, storage and transmission projects for the Upcountry area.



## “Develop Water Source and Related Infrastructure for Agricultural and Residential Lots

- Develop new water source, storage and transmission infrastructure to serve the build-out of the Waiohuli-Kēōkea homesteads” (Page 33)

### Accountability to...

### DHHL’s 2010 KĒŌKEA-WAIOHULI REGIONAL PLAN PROJECTIONS

(Page 39)

#### Priority Project - Support Development of Kihei to Kula Road Through Hawaiian Home Lands

**Description:** Kēōkea and Waiohuli homesteaders expressed a desire for a bypass road connecting Kula to Kihei. This would provide upcountry residents with easier access to the urban and commercial centers of Kihei, provide an alternate access road out of Kula in the event of an emergency, allow upcountry youth to attend Kihei schools, and bring more business into the upcountry area.

**Estimated Completion Date:** December 2011 (To initiate discussions with Haleakala Ranch, SDOT and initiate environmental review process)

**Location:** Kula, Kihei

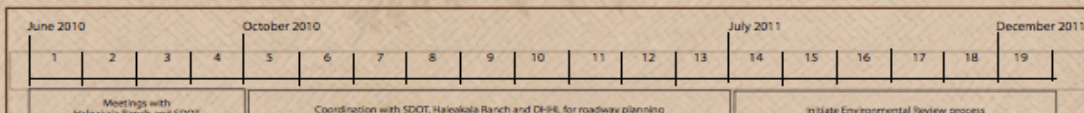
**Status:** Currently there is a parcel of land between Kihei and the DHHL homesteads that is owned by Haleakala Ranch. Coordination with Haleakala Ranch would need to be undertaken to negotiate use of their land. Discussions with the State Department of Transportation is needed to determine whether the proposed roadway could be added to the State Transportation Infrastructure Program (STIP) for funding.

**Partners:** Haleakala Ranch, State Department of Transportation (SDOT), DHHL

**Cost:** Unknown

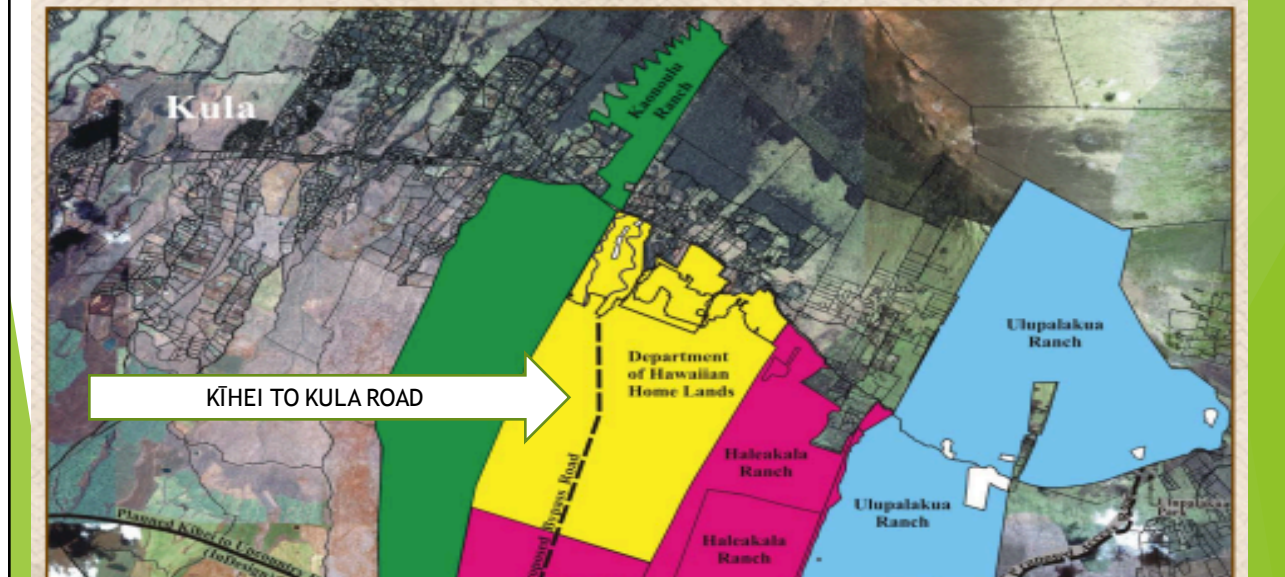
**CRITICAL PATH**

- Schedule meetings with Haleakala Ranch to discuss proposed roadway bypass and negotiate use of their land.
- Schedule meetings with SDOT to discuss STIP funding.
- Coordinate with SDOT and neighboring landowners for future regional roadway planning.
- Initiate environmental review process upon securing potential alignment for roadway.
- Secure financing for DHHL’s portion of the proposed roadway bypass through DHHL lands.



*Accountability to...***DHHL's 2010 KĒŌKEA-WAIOHULI REGIONAL PLAN PROJECTIONS**

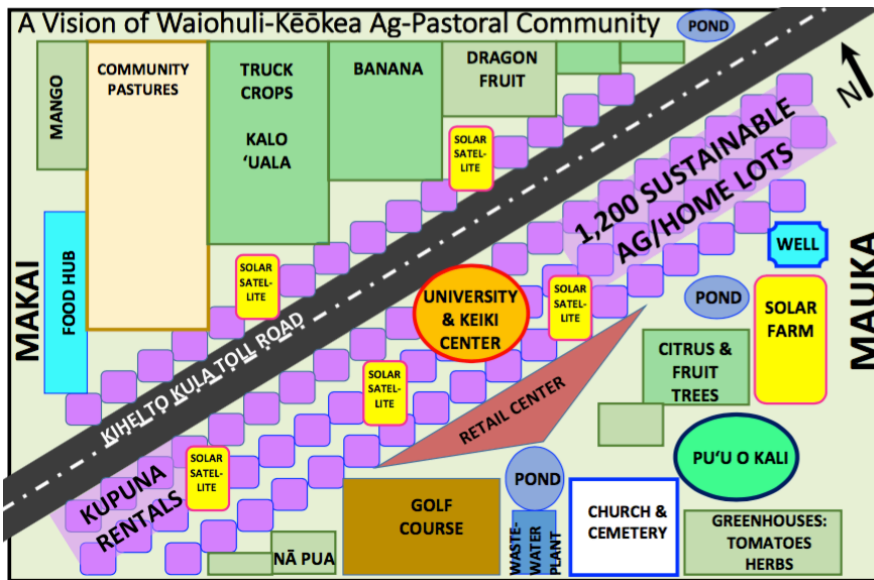
(Page 38)

**KIHEI TO KULA ROAD ALTERNATIVES**

### “Support the Development of a Kīhei to Kula Road Through Hawaiian Home Lands

- During review of the regional plan update, beneficiaries expressed a desire for a new roadway that would connect the Waiohuli-Kēōkea lands to the South Maui area. The new roadway would run through the DHHL lands
  - Exp Comp: December 2011 (to initiate discussions with Haleakala Ranch, SDOT and initiate environmental review process)”
- (Page 33)

## A Vision of Waiohuli-Kēōkea Ag-Pastoral Community



## Draft Vision of Waiohuli-Kēōkea Agricultural-Pastoral Community

- ▶ 1,200 One-acre Sustainable Agricultural Lots
- ▶ Native Hawaiian University and Keiki Work Center
- ▶ 100-acre Solar Farm
- ▶ Aquaculture Pond
- ▶ Water Reclamation Plant and Pond
- ▶ Production-Well Water Source
- ▶ Kula to Kīhei Toll Road
- ▶ 1,100 acres of Cooperative Farm Fields

## Wait Lists for Maui Agricultural and Pastoral Homelands

- ▶ Total: 5,247 Beneficiaries as of November 30, 2017
  - ▶ Agricultural Wait List: 4,640 Beneficiaries
  - ▶ Pastoral Wait List: 607 Beneficiaries



**Sarah Nākīhei,  
Maui Homestead  
Farmers & Ranchers  
Association  
president and a  
Launiupoko  
plumeria farmer, on  
county acreage.**

SARAH NĀKĪHEI

dent

Mau

**BOBBY PAHIA: Kalo Farmer, Businessman, & Maui Agricultural Wait-Lister for 37 years**

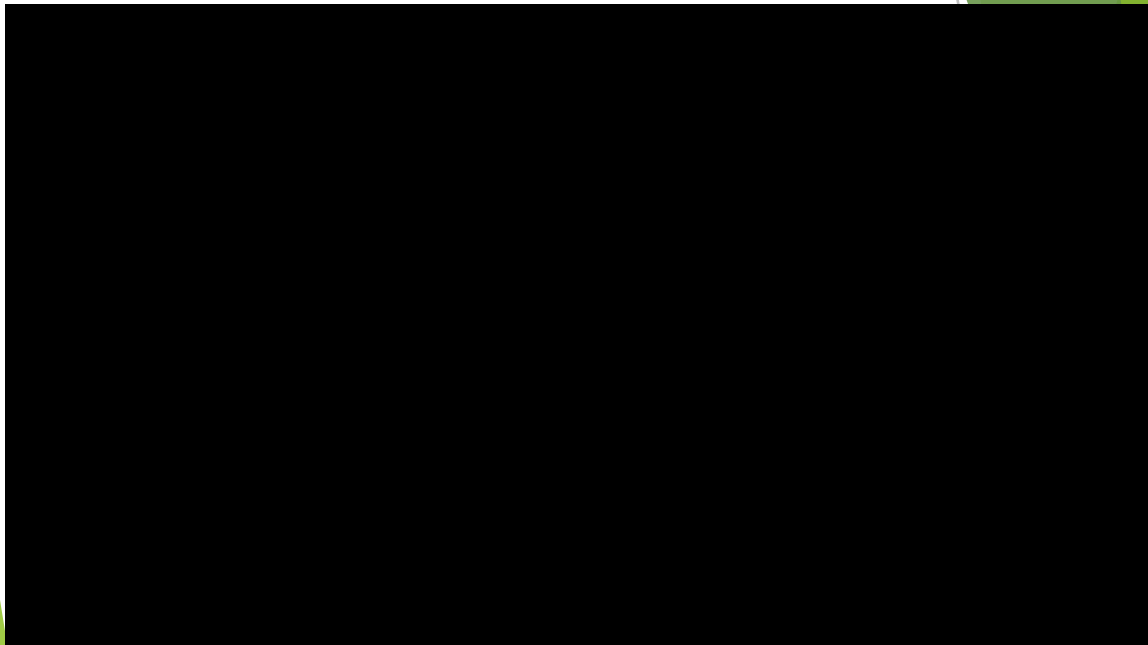


## FRANK ZAJAC

- ▶ Pa'upena CDC and Maui Homestead Farmers & Ranchers Association are collaborating to mentor and empower wait-listers to plan, design and develop their own ag and pastoral communities. To facilitate the process, Pa'upena has formed a six-member Maui Homestead Contractors Support Group led by Frank Zajac.
- ▶ Frank Zajac, a veteran Ha'iku, Maui contractor, farmer, and competitive canoe paddler, formerly built New Mexico residential developments.



## AUNTIE MATTIE KŪKAHIKO-KAEO



# He Mau Nīnau

## Any Questions?

Kekoa Enomoto

Email: [kenomoto1@hawaii.rr.com](mailto:kenomoto1@hawaii.rr.com)

[paupena.kekoa@gmail.com](mailto:paupena.kekoa@gmail.com)

Call: 808-276-2713